



**GEMS NEW MILLENNIUM SCHOOL  
AL KHAIL**

**UNIFORM GUIDE**

# INDEX

➤ Introduction	3
➤ Core Uniform Boys (KG1 to G4)	4
➤ Core Uniform Boys (G5 to G10)	5
➤ Core Uniform Boys (G11 to G12)	6
➤ Core Uniform Girls (KG1 to KG2)	7
➤ Core Uniform Girls (G1 to G10)	8
➤ Core Uniform Girls (G11 to G12)	9
➤ PE & Winter Uniform (All Grades)	10
➤ Swimwear (All Grades)	11
➤ Uniform Care	12
➤ Shopping & Customer Care	13
➤ Sizing	14-20
➤ Iron on name label	21

Dear Parent,

We would like to take this opportunity to welcome you to Threads. This guide has been put together to assist you on the following:

- Selecting the correct uniform for your child
- Identifying the suitable size
- Maintaining the uniform
- Ordering
- Retail locations relevant to your school
- Information on customer service

Whilst every effort is made to ensure that the experience of purchasing your child's uniform is that of a smooth nature, if you have any queries, concerns, or suggestions, we request you to kindly forward these to our Customer Service Team at [support@threadsme.com](mailto:support@threadsme.com)

This will help us to assist you in a more efficient and timely manner. We value your relationship and wish your child a successful year ahead.

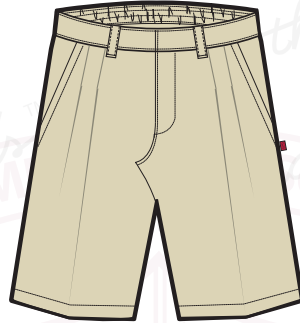
Thanking You,  
Team

 threads™

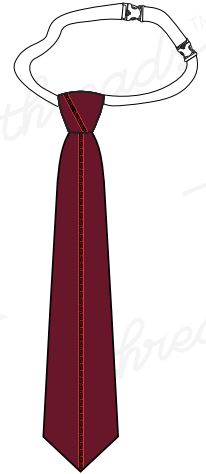
### SHORT SLEEVE SHIRT



### SHORTS



### TIE

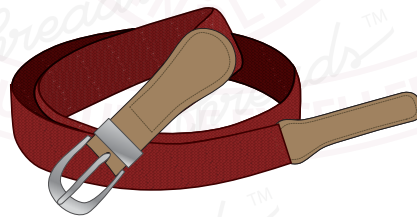


**Grade 1 to 4**

### SOCKS & SHOES



### BELT



### SCHOOL BAGS WITH LOGO

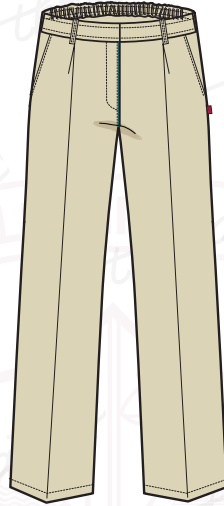


**16 & 18 Inches bag**

### SHORT SLEEVE SHIRT



### TROUSERS



### TIE & BELT

#### Full Tie



### SHOES & SOCKS



### MAROON BLAZER



**Grade 6 to 10**

### SCHOOL BAGS WITH LOGO

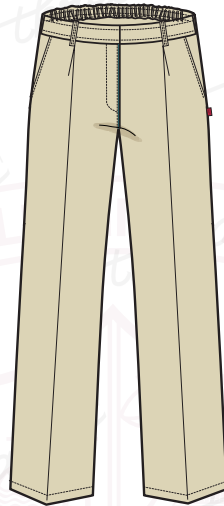


**16 & 18 Inches bag**

### SHORT SLEEVE SHIRT



### TROUSERS



### TIE & BELT

#### Full Tie



### SHOES & SOCKS



### MAROON BLAZER



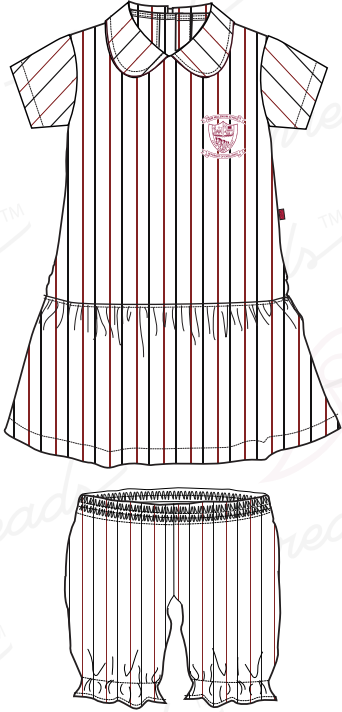
**Grade 11 to 12**

### SCHOOL BAGS WITH LOGO



**16 & 18 Inches bag**

### DRESS WITH BLOOMER



### SOCKS



### SCRUNCHIES



### BLACK SHOES



### SCHOOL BAGS WITH LOGO



16 Inches Bag

### SCHOOL BAGS WITH LOGO



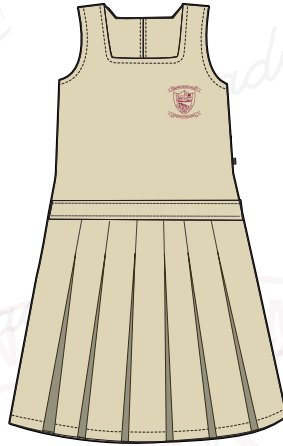
16 Inches Bag

### SHORT SLEEVE BLOUSE



### PINAFORE

Grade 1 to 4



### SKIRTS

Grade 5 to 10



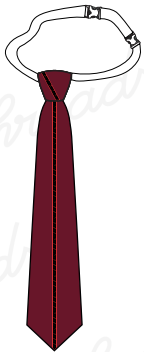
Long Skirt  
MTM option

### TIES

Elastic Tie

Full Tie

G5 to G10

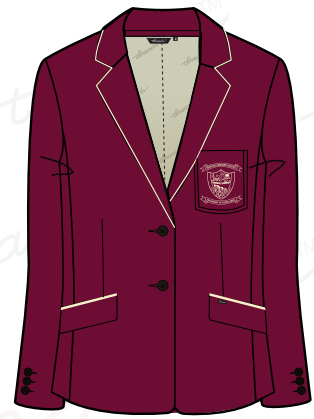


G1 to G4

### SCRUNCHIES



### MAROON BLAZER

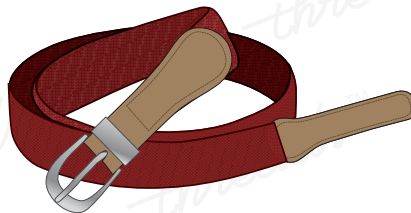


Grade 6 to 10

### BLACK SHOES/WHITE SOCKS



### BELT



### SCHOOL BAGS WITH LOGO

16 Inches bag



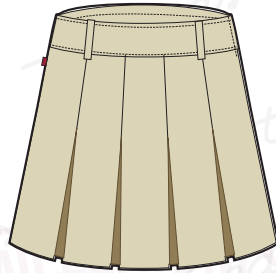
18 Inches bag



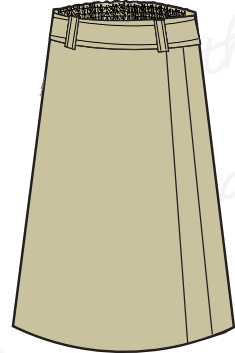
### SHORT SLEEVE BLOUSE



### KNEE SKIRT



### LONG SKIRT



**Long Skirt only offered as a MTM option**

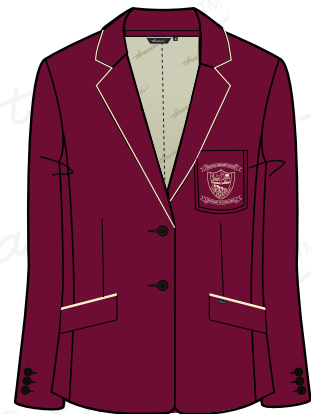
### WHITE SOCKS



### SCRUNCHIES



### MAROON BLAZER

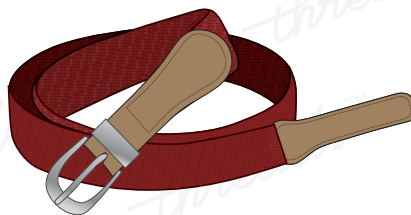


**Grade 11 to 12**

### BLACK SHOES



### BELT



### SCHOOL BAGS WITH LOGO

**16 Inches bag**



**18 Inches bag**



HOUSE COLOURS			
<b>RED</b>	<b>GREEN</b>	<b>BLUE</b>	<b>YELLOW</b>
<b>AUTUMN</b>	<b>SPRING</b>	<b>WINTER</b>	<b>SUMMER</b>





The following guidelines will help you gain longevity from your garment.

## WASH CARE SYMBOLS



SKIRTS/  
TROUSERS/  
PINAFORE/  
SHORTS

Wash at 40°C.  
Higher temperatures will cause shrinkage, affect the colour or weaken the fibres.  
Wash dark colours separately.  
Avoid strong fabric conditioners as they can break the fibres.

Do not bleach.  
Do not tumble dry pleated garments as the pleats will disappear.  
For best results simply drip dry after washing.

Warm iron if needed (150°C maximum).  
If you want to improve the creases, use a steam iron or a clean damp cloth, with a regular iron.  
Do not iron on top of Print or Embroidery directly, please iron on reverse side.  
Never use a hot iron directly on the garment.

## WASH CARE SYMBOLS



SPORTS SHORTS/  
TRACK PANTS/  
PE POLO SHIRTS

Wash at 40°C.  
Higher temperatures will cause shrinkage, affect the colour or weaken the fibres.  
Wash dark colours separately.  
Remove promptly.  
Avoid strong fabric conditioners.

Do not bleach.  
These products will dry very quickly, if left to dry naturally, but if you want to do tumble dry, please do it in cool / lowsetting & remove promptly.  
Drip dry after washing.

Ironing is not necessary for these products. However if you still want to iron, use a cool iron setting (110°C maximum).  
Do not iron directly on the garment, place a clean damp cloth between the garment and the iron.  
Do not iron with excessive heat as this makes the fabric brittle. Do not iron on top of print or Embroidery directly, please iron on reverse side.

## WASH CARE SYMBOLS



SHIRTS - BLOUSES  
65% Polyester,  
35% Cotton weave

Can be machine washed on a Gentle / polyester / easy care / delicate setting, with upto 40°C.  
Avoid strong fabric conditioners.  
Wash dark colours separately.

Do not bleach.  
These garments can be tumble dried on a cool/lowsetting.  
If the temperature is higher the fibres can be damaged and shrinkage may occur.

With these garments ironing is not always necessary, if it is hanged during drying after washing.  
However if you still want to do ironing, change the setting to synthetic/cool iron (110°C maximum) and do iron.  
Ironing will be easier if the garment is slightly damp.  
Do not iron on top of print or Embroidery directly, please iron on reverse side.

## WASH CARE SYMBOLS



Knitted fabrics 100% acrylic; combinations of : wool/nylon, wool/acrylic, wool/polyester (jumpers, cardigans, scarves & hats); cotton/acrylic; cotton/polyester; cotton/nylon

Turn the garment inside out before washing, to reduce the loose fibres adhering to the outer surface of other garments.  
Use Cool 30°C washing with gentle / delicate / wool setting, with a short spin.  
Always wash the garment separately, or with similar colour garments. Use only mild detergent if required.  
Some fabric conditioners may harm the garment fibres thereby increasing pilling

Do not bleach.  
Do not tumble dry, the fabric can be damaged and the neck, welt and cuffs can lose their elasticity.  
Always dry FLAT and Dry in the shade (direct sunlight will harm the garment).

NEVER iron on the face fabric of the garment, as it will change the appearance of the garment and cause shine.  
Always iron the inside of the garment.

## SHOE CARE - BLACK

Simply remove excess dirt with a cloth and / or a brush and apply the cream shoe polish never liquid shine evenly to your shoes.  
Make it a point to polish your shoes once in 2 days to restore the appearance of your shoes.  
Store your shoes using a shoe tree, this will help the shoe retain its shape.  
If you don't have a shoe tree, stuff the toe cap with newspaper or tissue.  
Never store shoes near direct heat.

\* KINDLY NOTE THAT ANY PRINTS / LOGOS / EMBELLISHMENTS MUST NOT BE IRONED ON DIRECTLY BUT INSTEAD ON THE REVERSE.

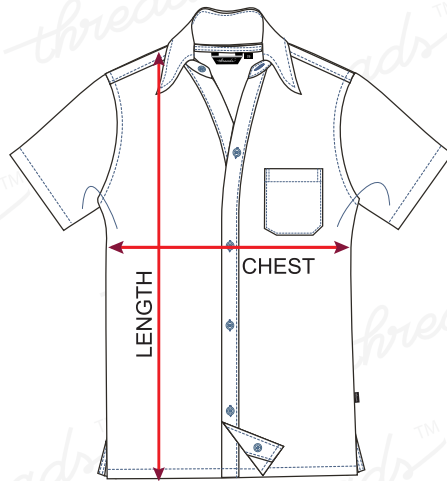
## Shopping & Customer care

Please visit our website [www.threadsme.com](http://www.threadsme.com) for updated information on our operational timings. You can also see our notice board to get the updated information about uniform availability.

**Shop online :** You can now shop online at [www.threadsme.com](http://www.threadsme.com) Subject to availability your order will be dispatched within 8 - 10 working days to your registered / requested location. Once your order has been dispatched you will be notified of the tracking number and you can track your order online.

**Made to measure** (custom-made uniforms) option is also available if your preferred size is not in stock. The standard delivery time is 15 days during the off peak seasons and will extend up to 30 days during the peak seasons. To request a made to measure form or require any assistance on made to measure kindly send an email to [support@threadsme.com](mailto:support@threadsme.com), alternatively you can request an online appointment at [www.threadsme.com](http://www.threadsme.com)

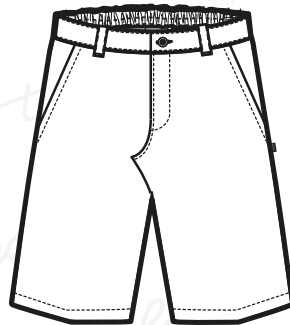
At Threads we take our commitment to customer service very seriously. Customer concerns and queries can be registered at [support@threadsme.com](mailto:support@threadsme.com) or through our toll free number (800-THREADS) A customer services representative will respond to your query within 24 working hours.



### Polo Shirt

SIZE:	2	4	6	8	10	12	14	16	18	20	22	24	26
FULL CHEST	68	71	74	77	80	83	86	89	92	95	98	101	104
LENGTH	48	50	52	54	56	58	60	62	64	66	68	70	72
SIZE:	28	30	32	34									
FULL CHEST	107	110	113	116									
LENGTH	74	76	78	80									

All measurements are in centimeters



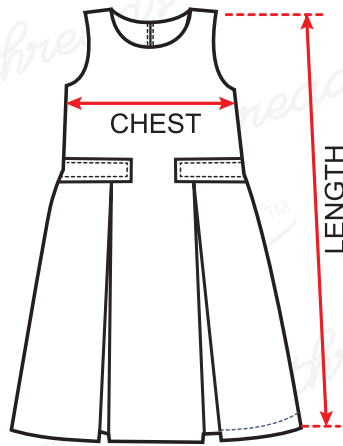
### Shorts

SIZE:	2	4	6	8	10	12	14	16	18	20	22	24	26
FULL CHEST	47	50	53	56	59	62	65	68	71	74	77	80	83
LENGTH	27	29	31	33	35	37	39	42	45	47	49	51	53
SIZE:	28	30	32	34									
FULL CHEST	86	89	92	95									
LENGTH	55	57	59	61									

All measurements are in centimeters

### NOTE

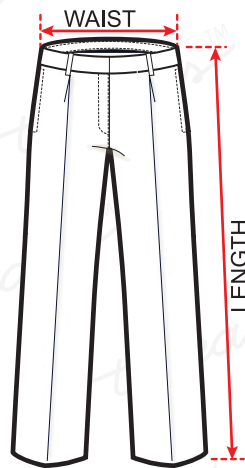
All measurements are in Centimeters.  
 These sizes are only a guide and may vary for the Individual body type.



**Pinafore**

SIZE:	4	6	8	10	12	14	16	18					
FULL CHEST	64	68	72	76	80	84	88	92					
LENGTH	62	64	66	68	70	72	74	76					

All measurements are in centimeters



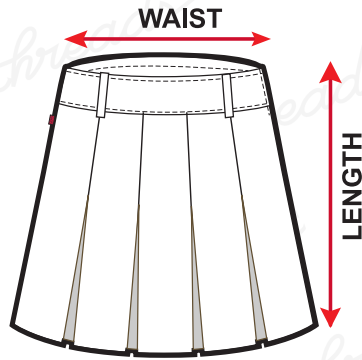
**Boys Trousers**

SIZE:	2	4	6	8	10	12	14	16	18	20	22	24	26
WAIST	47	50	53	56	59	62	65	68	71	74	77	80	83
LENGTH	65	69	72	76	84	87	90	93	96	99	102	105	108
SIZE:	28	30	32	34									
WAIST	86	89	92	95									
LENGTH	111	114	118	121									

All measurements are in centimeters

**NOTE**

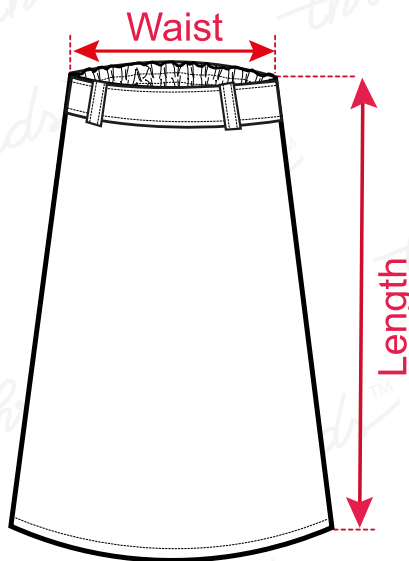
All measurements are in Centimeters.  
 These sizes are only a guide and may vary for the Individual body type.



**Knee Skirt**

SIZE:	2	4	6	8	10	12	14	16	18	20	22	24	26
FULL WAIST	57	59	61	64	67	70	73	76	79	82	85	88	91
LENGTH	38	40	42	46	48	52	54	56	58	60	62	64	66
SIZE:	28	30	32										
FULL WAIST	94	97	100										
LENGTH	68	70	72										

All measurements are in centimeters



**Long Skirt**

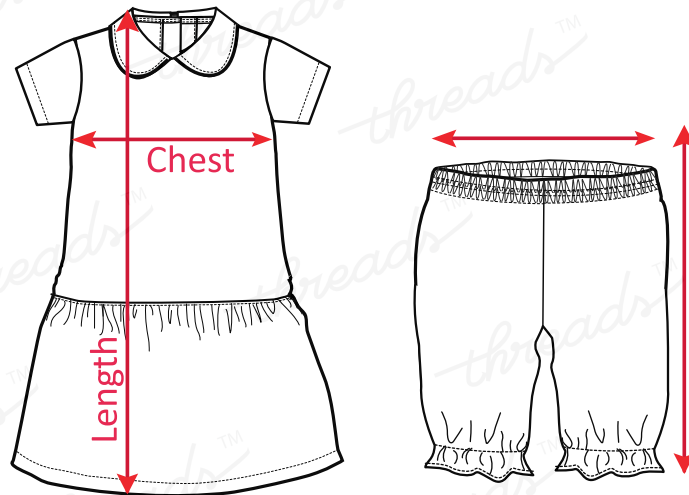
SIZE:	2	4	6	8	10	12	14	16	18	20	22	24	26
FULL WAIST	57	59	61	64	67	70	73	76	79	82	85	88	91
LENGTH	71	73	75	77	81	83	85	87	89	91	93	95	97
SIZE:	28	30	32										
FULL WAIST	94	97	100										
LENGTH	99	101	103										

All measurements are in centimeters

**NOTE**

All measurements are in Centimeters.  
 These sizes are only a guide and may vary for the Individual body type.





**Frock Set**

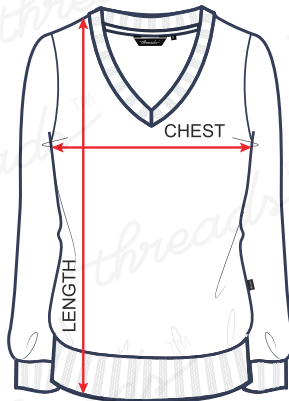
**Frock**

SIZE:	2	4	6	8	10	12	14	16	18	20	22	24	26	28
FULL WAIST	68	71	74	77	80	83	86	89	92	95	98	101	104	107
LENGTH	62	64	66	67	68	72	74	76	78	80	82	84	86	88

**Bloomer**

SIZE:	2	4	6	8	10	12	14	16	18	20	22	24	26	28
FULL WAIST	39	42	45	48	51	54	57	58	61	64	67	70	73	76
LENGTH	32	34	36	38	40	42	44	46	48	50	52	54	56	58

All measurements are in centimeters



**Pullover**

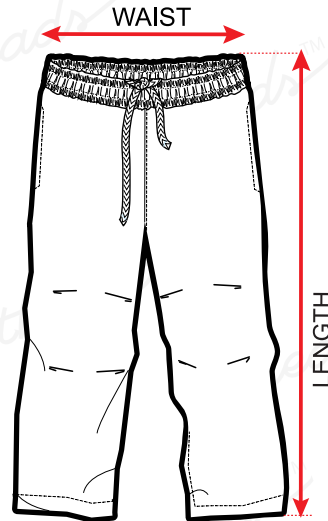
SIZE:	18	20	22	24	26	28	30	32	34	36	38	40	42
FULL CHEST	57	61	65	69	73	77	81	85	89	93	97	101	105
LENGTH	39	41	43	45	47	49	52	54	56	58	60	62	64

SIZE:	44	46	48										
FULL CHEST	109	113	117										
LENGTH	66	68	70										

All measurements are in centimeters

**NOTE**

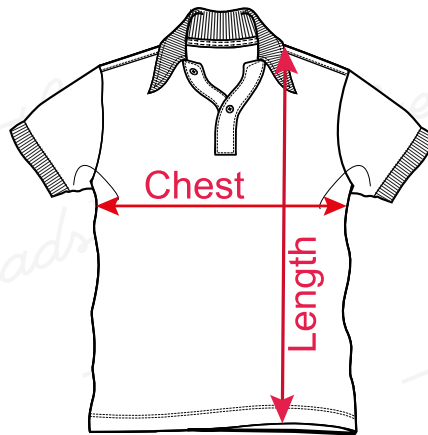
All measurements are in Centimeters.  
These sizes are only a guide and may vary for the Individual body type.



**Unisex PE Track Pant**

SIZE:	2	4	6	8	10	12	14	16	18	20	22	24	26
FULL WAIST	47	50	53	56	59	62	65	68	71	74	77	80	83
LENGTH	64	68	72	76	80	83	86	89	92	95	98	101	104
SIZE:	28	30	32	34	36								
FULL WAIST	86	89	92	95	98								
LENGTH	107	110	113	116	119								

All measurements are in centimeters



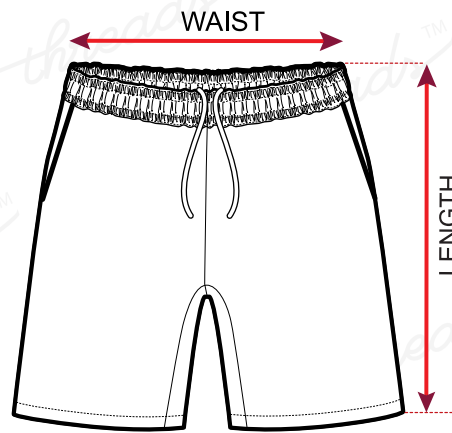
**Unisex Polo Shirt**

SIZE:	2	4	6	8	10	12	14	16	18	20	22	24	26
FULL CHEST	60	63	66	69	72	75	78	81	84	87	90	93	96
LENGTH	39	41	43	45	47	49	51	53	53	57	59	61	63
SIZE:	28	30	32	34									
FULL CHEST	99	102	105	108									
LENGTH	65	67	69	71									

All measurements are in centimeters

**NOTE**

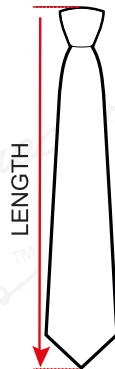
All measurements are in Centimeters.  
 These sizes are only a guide and may vary for the Individual body type.



**Unisex PE Shorts**

SIZE:	0	2	4	6	8	10	12	14	16	18	20	22	24
FULL WAIST	44	47	50	53	56	59	62	65	68	71	74	77	80
LENGTH	26	28	30	32	34	36	38	39	41	43	45	47	49
SIZE:	26	28	30	32	34	36							
FULL WAIST	83	86	89	92	95	98							
LENGTH	51	53	55	57	59	61							

All measurements are in centimeters



**Tie**

SIZE:													
ELASTIC TIE LENGTH	48	52	56	60									
FULL TIE LENGTH	10	12	15	16									

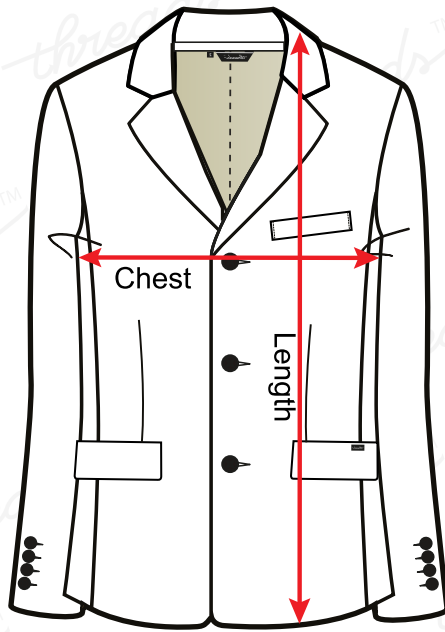
**Shoes**



UK SIZE	9	10	11	12	13	1	2	3	3.5	4	4.5	5	6	7	8	9	10	11	12	13
EU SIZE	27	28	29	30	31	32	33	34	35	36	37	38	39	40	41	42	43	44	45	46

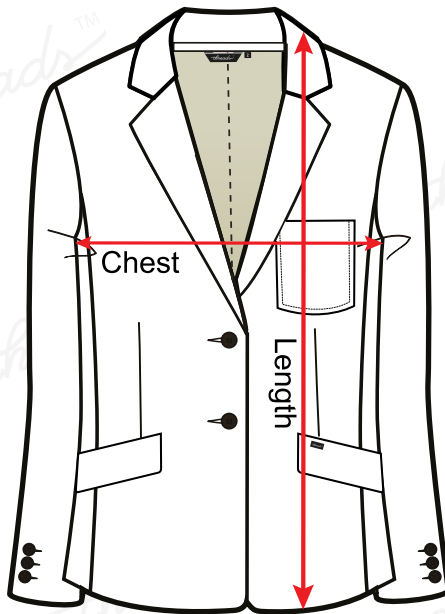
**NOTE**

All measurements are in Centimeters.  
 These sizes are only a guide and may vary for the Individual body type.



**Boys Blazer**

SIZE:	24	26	28	30	32	34	36	38	40	42	44	46	
FULL CHEST	87	90	93	96	99	102	105	108	111	114	117	120	
LENGTH	65	67	68	69	69	70	71	72	73	74	75	76	



**Girls Blazer**

SIZE:	24	26	28	30	32	34	36	38	40	42	44	46	
FULL CHEST	87	90	93	96	99	102	105	108	111	114	117	120	
LENGTH	65	67	68	69	69	70	71	72	73	74	75	76	

**NOTE**

All measurements are in Centimeters.  
 These sizes are only a guide and may vary for the Individual body type.

## *Iron on Name Labels*

Iron on name labels are used to identify the clothes of your children. Our Iron on name labels are perfect for labelling virtually any type of clothing garment. The Iron on labels are suitable for any fabric which can be ironed. Iron on labels take seconds to apply and are guaranteed not to peel off or fade in a hurry. Please make sure you follow the below instructions.

- Remove a label from the clear backing material
- Set your iron to the hottest setting. NO STEAM...!
- Wait until the iron gets hot
- Place label on garment in desired position
- Cover label with a thin white clear A4 paper
- FIRMLY press heated iron on A4 paper for 15 seconds
- Verify your application time and iron temperature
- Apply labels to CLEAN, thoroughly dry garments only. Labels applied to soiled or damp garments will not adhere properly
- Allow garment and label to cool to room temperature. Then try to peel the label off with your fingernail. If you can peel it off, your iron is not hot enough. Use another iron or reapply it for 15-20 seconds



*Jennifer*

